

## Urban Facade

# Lloyd 26

Lot 107 Sprinter Way  
Ballarat



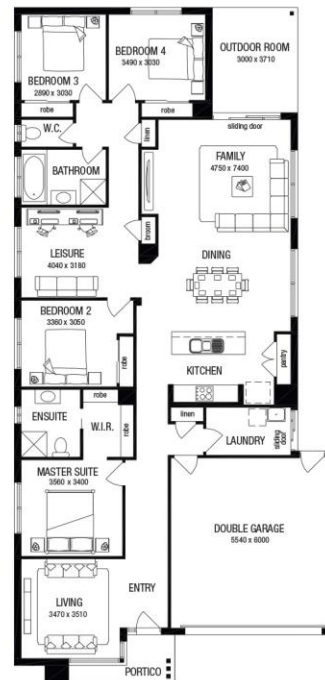
## Champions Estate

Fixed Price Package

# \$401,237\*

### Fixed Price Package Includes:

- Modern Urban façade
- Fixed site costs
- Stylish laminate flooring to entry, kitchen, family and dining^
- Elegant carpet to bedrooms^
- Stainless steel oven
- Stainless steel glass canopy range hood
- Stainless steel cooktop
- Gas ducted heating
- Council and Developer Guidelines
- BAL 12.5 requirements



Floor plan and standard specification shown. Floor plan may not reflect developer guidelines

Vista floorplan shown may vary from facade image shown. Floorplan does not reflect developer guidelines.

\* Package price excludes external lighting, telephone service, customer account opening fees, stamp duty on land, legal fees and conveyancing costs including titles and property report. ^Carpet and timber laminate Category 1 selection from ABC's set of colour scheme selections. Australian Building Company reserves the right to alter the images or descriptions without notice. See [abchomes.com.au](http://abchomes.com.au) for full details of standard inclusions and/or terms and conditions. All home & land packages are subject to developer approval. Land prices and availability are subject to change without notice. Newfield Real Estate Pty Ltd (ACN 159 312 722), Licence number 028051L. Package Printed Date: 15/07/2019 Price Region: Ballarat CDB-U 52968

For more information  
talk to us on **131 828** or go to  
**[abchomes.com.au](http://abchomes.com.au)**

